



Como Road, SE23 | Guide Price £475,000

02087029444

foresthill@pedderproperty.com

pedder
We live local



In General

- Share of Freehold
- Maisonette
- Two bedrooms
- Shared garden
- Private entrance, own front door
- Victorian features
- Quiet no through road
- Abundance of natural light
- Excellent transport links
- Close to local amenities

In Detail

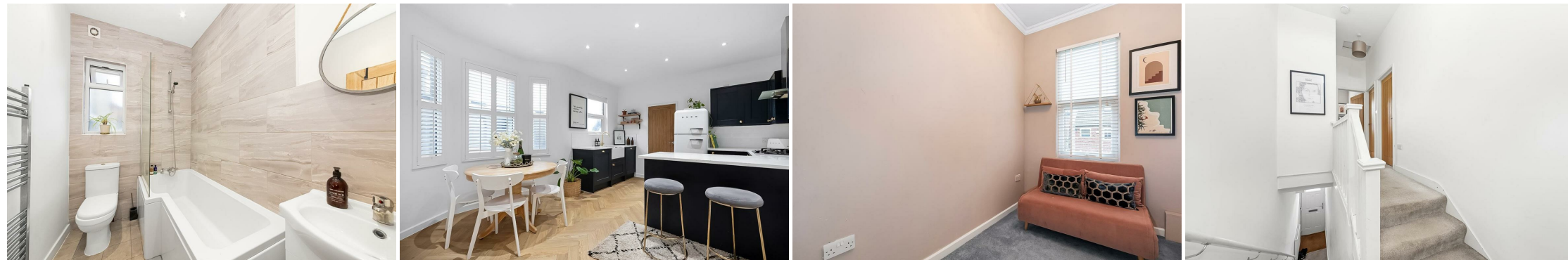
**** Guide Price £475,000 - £500,000 **** A beautiful two-bedroom, first-floor Victorian maisonette for sale on the popular Como Road, offered with a share of freehold.

Spanning 804 sq ft of internal space, the property comprises two double bedrooms, a bright and spacious reception room, a large renovated kitchen complete with a breakfast bar and parquet Amtico flooring, and a modern bathroom suite. Further benefits include a private entrance, access to a quiet shared garden that has potential to be split into private gardens, high ceilings with coving, wooden shutters, original features such as a fireplace, ample storage, and much more.

The property is located approximately 0.4 miles from Forest Hill station, offering excellent transport links to London Bridge, Victoria, Canada Water, Canary Wharf, Shoreditch, Whitechapel, Highbury & Islington, and many other destinations. It is also just a short walk from various local amenities, including a wide selection of restaurants, coffee shops, cafés, and gastro pubs, as well as being within close proximity to popular local schools.

Please call the Pedder Forest Hill sales team today to arrange a viewing.

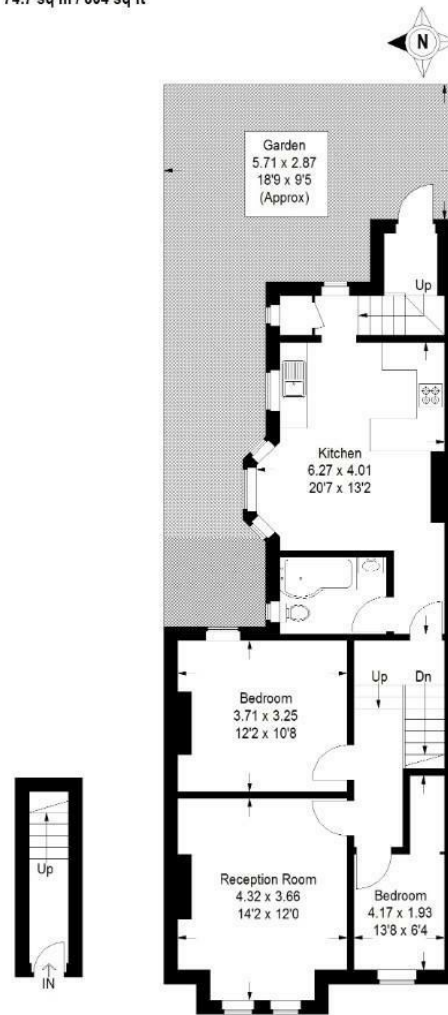
EPC: E | Council Tax Band: B | Share of freehold with underlying lease of 964 years | SC: £0 | GR: £0 | BI: TBC



Floorplan

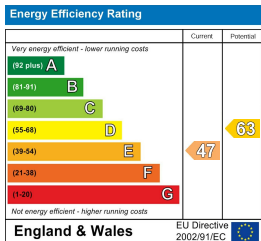
Como Road, SE23

Approximate Gross Internal Area
74.7 sq m / 804 sq ft



Ground Floor First Floor

Copyright www.pedderproperty.com © 2026
These plans are for representation purposes only as defined by RICS - Code of Measuring Practice. Not drawn to Scale. Windows and door openings are approximate. Please check all dimensions, shapes and compass bearings before making any decisions reliant upon them.



Pedder Property Ltd trading as Pedder for themselves and for the vendor/landlord of this property whose agents they are, give notice that (1) these particulars do not constitute any part of an offer or contract, (2) all statements contained within these particulars are made without responsibility on the part of Pedder or the vendor/landlord, (3) whilst made in good faith, none of the statements contained within these particulars are to be relied upon as a statement of representation or fact, (4) any intending purchaser/tenant must satisfy him/herself by inspection or otherwise as to the correctness of each of the statements contained within these particulars, (5) the vendor/landlord does not make or give either Pedder or any person in their employment any authority to make or give representation or warranty whatsoever in relation to this property.